

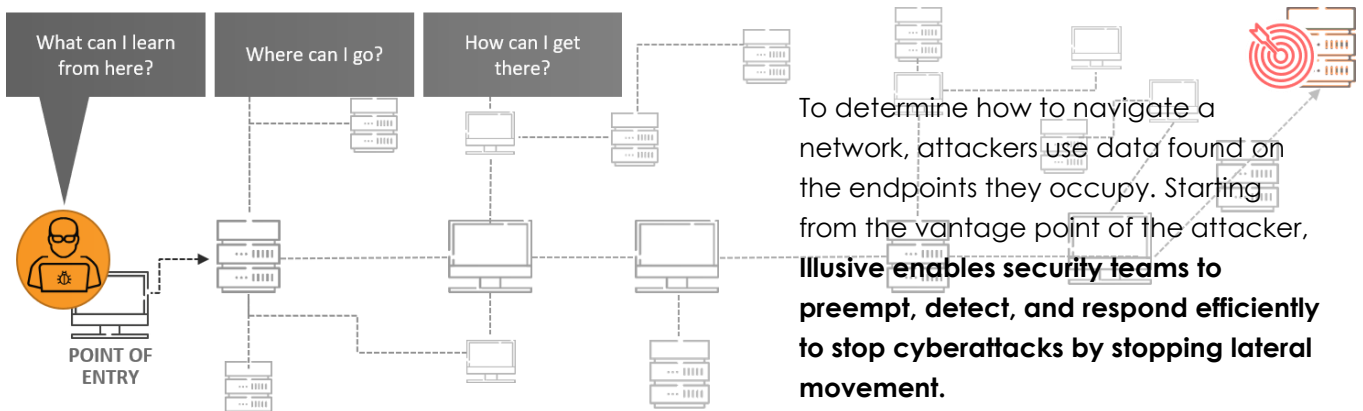
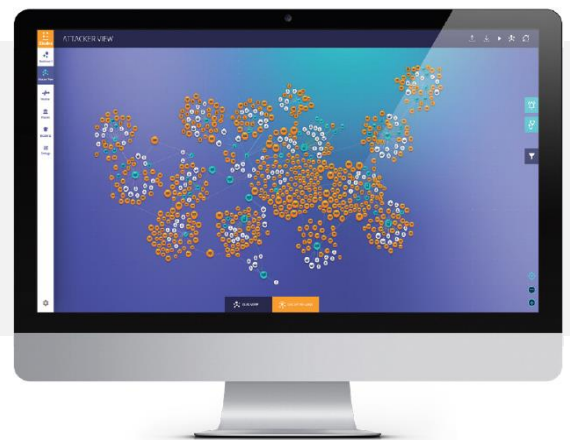
# Stop Attackers Before They Stop Your Business



- Agentless
- Noiseless
- Scalable
- Self-managing
- Risk-aware

Most organizations invest more each year in security technologies, frameworks, and cyber talent, yet devastating cyber incidents still occur. Attackers—whether outsiders or trusted insiders—can move silently for weeks or months. They use connectivity created by the business itself, until they're within striking distance. It then takes only seconds to compromise sensitive data, disrupt critical services, or steal money or IP. **With Illusive, these attacks can be stopped long before a business crisis occurs.**

*Illusive disarms attackers immediately upon entry by eliminating their ability to decide how, where, and when to move through your network.*

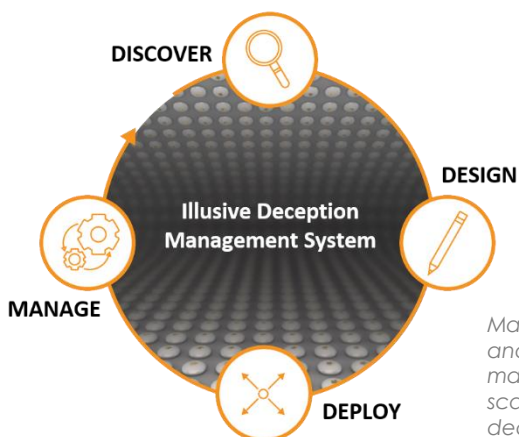


## PREEMPT

**Keep your environment clean of the attackers need to move forward.**

Every day, as employees routinely use applications and share data, they leave behind an invisible “access footprint”—credentials and connections to other systems. Illusive’s Attack Surface Manager enables defenders to define credential and connection rules, and perpetually discover and remove violations.

*Attack Surface Manager: See elements that increase attack risk*



*Machine learning and automation manage a tailored, scalable web of deceptions*

## DETECT

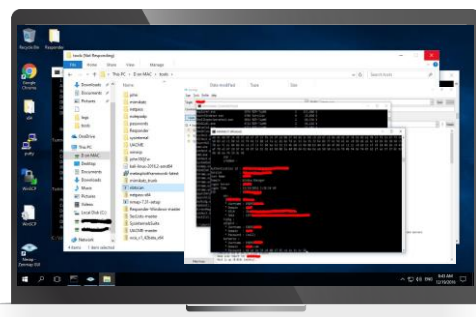
**Detect early by forcing attackers to reveal themselves.**

Once they’re in, adversaries search for data, credentials and paths to their targets. Illusive blankets the entire environment with featherweight deceptions that distort the attacker’s view of reality, making it impossible for them to choose a real path. With one erroneous move, the attacker sounds an alert. The defender is now in control.

## RESPOND

**Empower defenders with real-time forensics and risk-centric visibility.**

As an alert fires, forensics are instantly captured from the host where the attacker is operating, including a screenshot of the attacker’s current activity. Responders receive a human-readable incident report and see how far the attacker is from critical assets and high-powered credentials. Responders have the risk context they need to prioritize and act efficiently to minimize business impact.



*Illusive forensics preserves volatile system data*

## Contact us

**Illusive Networks** is a leader in deception-based cybersecurity solutions, empowering security teams to take informed action against high-impact cyberattacks by inhibiting and detecting the lateral movement of adversaries toward critical assets early in the process to prevent damage to the business.

Visit us and subscribe to our blog at [www.illusivenetworks.com](http://www.illusivenetworks.com)

Email: [info@illusivenetworks.com](mailto:info@illusivenetworks.com)

US: +1 844.455.8748

EMEA and AsiaPac: +972 73.272.4006

Find us:

